



SOSSUSVLEI DESERT LODGE
& Beyond Sossusvlei Private Desert Reserve, Namibia





DISCOVER &BEYOND SOSSUSVLEI DESERT LODGE

The Namib Desert is a landscape of seemingly endless spaces, profound tranquillity, and extraordinary light. One of the most spectacular areas on earth, this pristine desert wilderness is one of Africa's most compelling natural regions. Defined by infinite horizons, striking landscapes and craggy mountain heights, &Beyond Sossusvlei Private Desert Reserve is a 12 715 hectare (31 420 acre) private concession of iconic dunes and arid desert in this vast place of nothingness.

The spectacular dunes at Sossusvlei, arrayed in magnificent hues of orange, buttermilk, pumpkin and sienna, are part of the Namib Sand Sea which is the biggest dune field south of the Sahara. Towering over a vast, dry pan, these lofty dunes, shaped by sands millions of years old, are among the highest in the world. Known as the Living Desert, the dunes of the Namib abound with wildlife and over 114 bird species.

Emerging from the landscape is &Beyond Sossusvlei Desert Lodge, a spectacular masterpiece of glass, rock and steel pavilions with a bold geometric structure at the centre. The lodge extends over an ocean of dunes and gravel planes, in perfect harmony with its elemental surrounds. The guest area features floor to ceiling, frameless glass panels that fold away to reveal unobstructed desert vistas. An inviting central-island bar and comfortable sitting room allows for convivial conversation, while a number of smaller spaces offer a more intimate option. The interactive kitchen design allow for guests to create their own dishes and menu should they wish to. A range of singular interior and exterior dining spaces ensures guests never dine in the same place twice. A fine selection of wines from an impressive walk-in wine cellar complements sublime meals, while the Lodge Shop displays Namibia's finest craft offerings.

Other signature features include a one-of-a-kind gym, elevated and ideally positioned to catch the desert sunrise while doing an early-morning yoga session, or quick session on the treadmill before breakfast. A two-part wellness centre offers a treatment room and a private spa-bath, as well as a wet treatment room with a shower and bath, complete with its own skylight for early-evening star-gazing.

At sunset, wildlife is drawn to a nearby waterhole, a double bonus to sundowner time in the desert. The Sossusvlei skies, one of the world's few Dark Sky Reserves, are a wonder-world of constellations. Every evening, guests are invited to celebrate these magnificent skies with a resident astronomer at the on-site, world-class observatory.

Cradled against the ancient mountains, &Beyond Sossusvlei Desert Lodge is renowned for its superlative accommodation overlooking the starkly beautiful Namib Desert. 10 exquisite suites offer the sophistication of simplicity, reflecting chic desert-inspired minimalism, and the two-bedroomed Star Dune Suite is ideal for families or groups of friends, who prefer more privacy.

Desert adventures abound here, and small-group, personalised guest activities are on offer. Options include a Sossusvlei Excursion to climb 'Big Daddy' and a visit to Deadvlei, exploring the secrets of the dunes on foot and quad bike on the Desert Spirit Experience. Discover the ancient San Bushmen era on the Desert People Experience and the fascinating geology in the area on the Desert Rock Experience. Sip sundowners on a Desert Drive, strap on your boots for the Big Dune Walk, an exclusive adventure with the only private reserve featuring the iconic star dunes of Namibia, go stargazing, hot air ballooning, hiking, E-biking and unwind with Healing Earth Wellness Treatments.



GETTING THERE

eBeyond Sossusvlei Desert Lodge

Private Lodge Airstrip

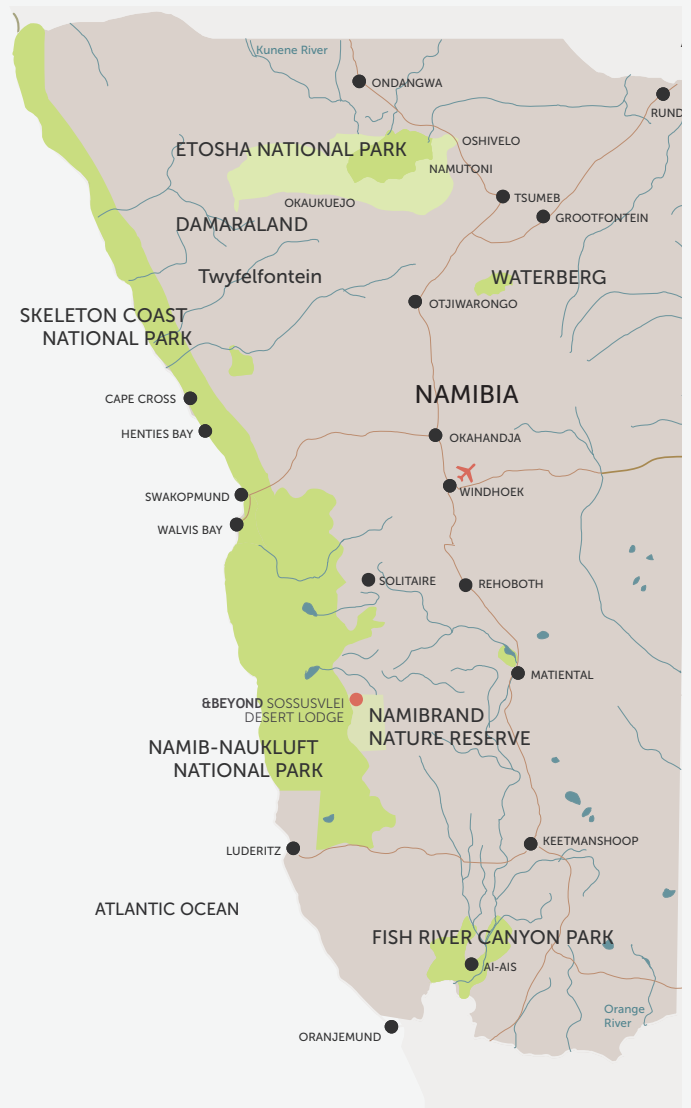
1hr 15min flight from Windhoek, followed by a 10min road transfer to the lodge.

- There are scheduled daily charter flights to the lodge's private airstrip

Self-drive

It is advisable to use a 4x4 vehicle during the rainy season, from November to May.

- The lodge is a 400km (248mi.) drive from Windhoek and a 380km (236mi.) drive from Swakopmund on good quality gravel roads





ONCE IN A LIFETIME EXPERIENCES

You'll regret it if you don't!

INCLUDED	EXCLUDED
<p>Guided:</p> <ul style="list-style-type: none"> • Sossusvlei Excursion • Desert Spirit Experience • Desert People Experience • Desert Rock Experience • Desert Drive • Big Dune Walk • Stargazing <p>Self-exploration:</p> <ul style="list-style-type: none"> • E-biking • Hiking 	<p>Additional cost:</p> <ul style="list-style-type: none"> • Healing Earth Wellness Treatments • Hot Air Ballooning

WHILE YOU'RE IN THE NEIGHBOURHOOD

An itinerary for all...

FIRST-TIME TRAVELLERS	BUCKET LIST ADVENTURE
<ul style="list-style-type: none"> • 3 nights &Beyond Sossusvlei Desert Lodge • 4 nights Damaraland / Etosha • 2 nights Skeleton Coast 	<ul style="list-style-type: none"> • 3 nights Kruger National Park - South Africa • 2 nights Victoria Falls - Zimbabwe • 4 nights Okavango Delta - Botswana • 3 nights Cape Town - South Africa • 3 nights &Beyond Sossusvlei Desert Lodge - Namibia • 3 nights Skeleton Coast / Etosha - Namibia



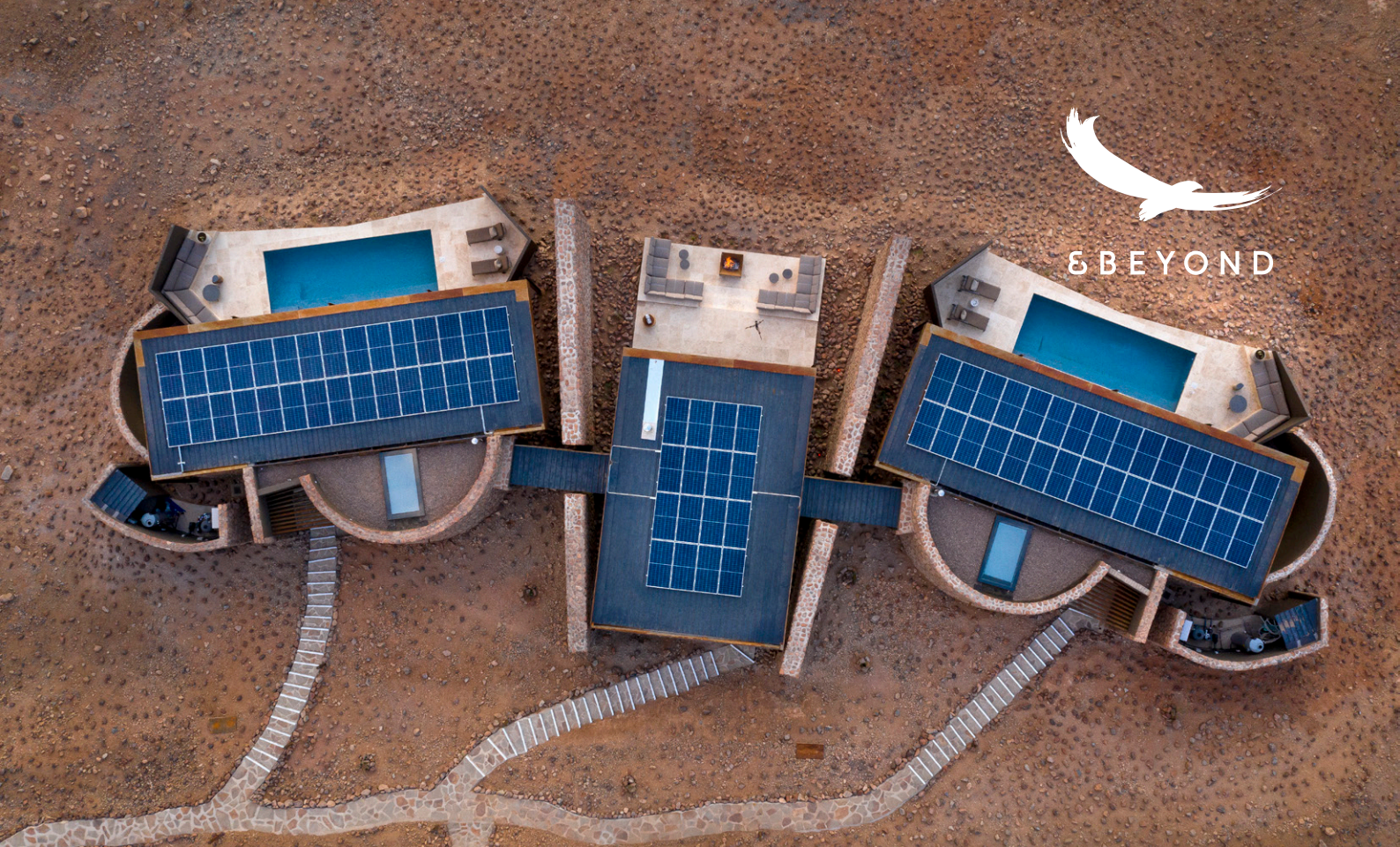
TIMING IS EVERYTHING

The Namib Desert in Namibia is a wonderful year-round destination to explore, which offers many attractions in every season.

	JAN	FEB	MAR	APR	MAY	JUN	JUL	AUG	SEP	OCT	NOV	DEC
Average High Temperature (C°)	34°	35°	35°	33°	30°	27°	27°	28°	32°	33°	34°	34°
Average Rain Fall (mm)	4	7	8	7	2	1	1	0	1	3	4	2
Rate Season - Mid (\$) High (\$\$)	\$\$	\$	\$	\$	\$	\$\$	\$\$	\$\$	\$\$	\$\$	\$	\$\$
Namib dune and desert adventure												
Birdwatching - when migratory birds are in Namibia												
Capture silhouettes of stark, beautiful red dunes												
Exceptional stargazing												
Embark on a Hot Air ballooning adventure												
Enjoy a hike due to cooler weather												
Sundowners on a Desert Drive Experience												
Sossusvlei Excursion to Sesriem and Deadvlei												
E-biking adventures												
Desert People Experience to view San rock paintings												
Desert Spirit Experience on foot and quad bike												



&BEYOND



AT A GLANCE

- 10 air-conditioned glass desert suites
- 1 Star Dune Suite (two bedrooms, private lounge and dining area)
- State-of-the-art sustainable design
- In-room fireplaces for the colder months
- Indoor & outdoor showers
- Star-viewing skylights above the beds
- Private plunge pools
- Lodge Shop
- Observatory with a resident astronomer
- Walk-in wine cellar
- Interactive kitchen & central island bar
- A two-part wellness centre with a treatment room and gym
- Family-friendly with fun-filled WILDChild programme
- Oryx, Hartmann's mountain zebra, springbok, ostrich and leopard

WHAT SETS US APART

- Exceptional stargazing, with star-viewing skylights and fully equipped observatory
- Situated on the edge of the Namib Sand Sea, the biggest dune field south of the Sahara
- Experienced, knowledgeable guides, each one exceptionally specialised in their unique skill and interest
- A place of wellness and holistic connectivity

PERFECT FOR:

- Outdoor enthusiasts
- Groups or multi-generational families
- Honeymooners
- Romantic getaways
- Individual travellers

SUSTAINABILITY INITIATIVES

- Sustainable design solutions allow for state-of-the-art water saving mechanisms, water harvesting and recycling systems and photovoltaic power generation in every room. Each building is like its own solar power plant, producing enough energy to not only power the air conditioning and all the typical comforts of a luxury lodge but also the water treatment and recycling systems.
- By bottling water on site and using recycled glass bottles, &Beyond Sossusvlei saves a significant amount of CO² per month, absorbing the carbon footprint of the plastic water delivery truck. At 100% occupancy, the lodge would have consumed thousands of plastic water bottles per month.
- All cleaning products used at &Beyond Sossusvlei are environmentally friendly and 100% biodegradable.
- All energy use at &Beyond Sossusvlei is stringently tracked and reported on a monthly and quarterly basis. This includes the use of wood, petrol, diesel, electricity, gas and paraffin.
- The following steps are taken to conserve water:
 - Rooms designed without baths
 - Water usage is strictly monitored
 - All systems are regularly checked for leaks
- All fuel storage areas are bunded to contain spillage.
- All vehicle wash bays are equipped with fuel and oil traps to prevent water pollution.
- The lodge undergoes an annual sustainability audit to determine its environmental impact. As part of this, its carbon footprint is being monitored and actively reported on.

ACCOMMODATION & LAYOUTS





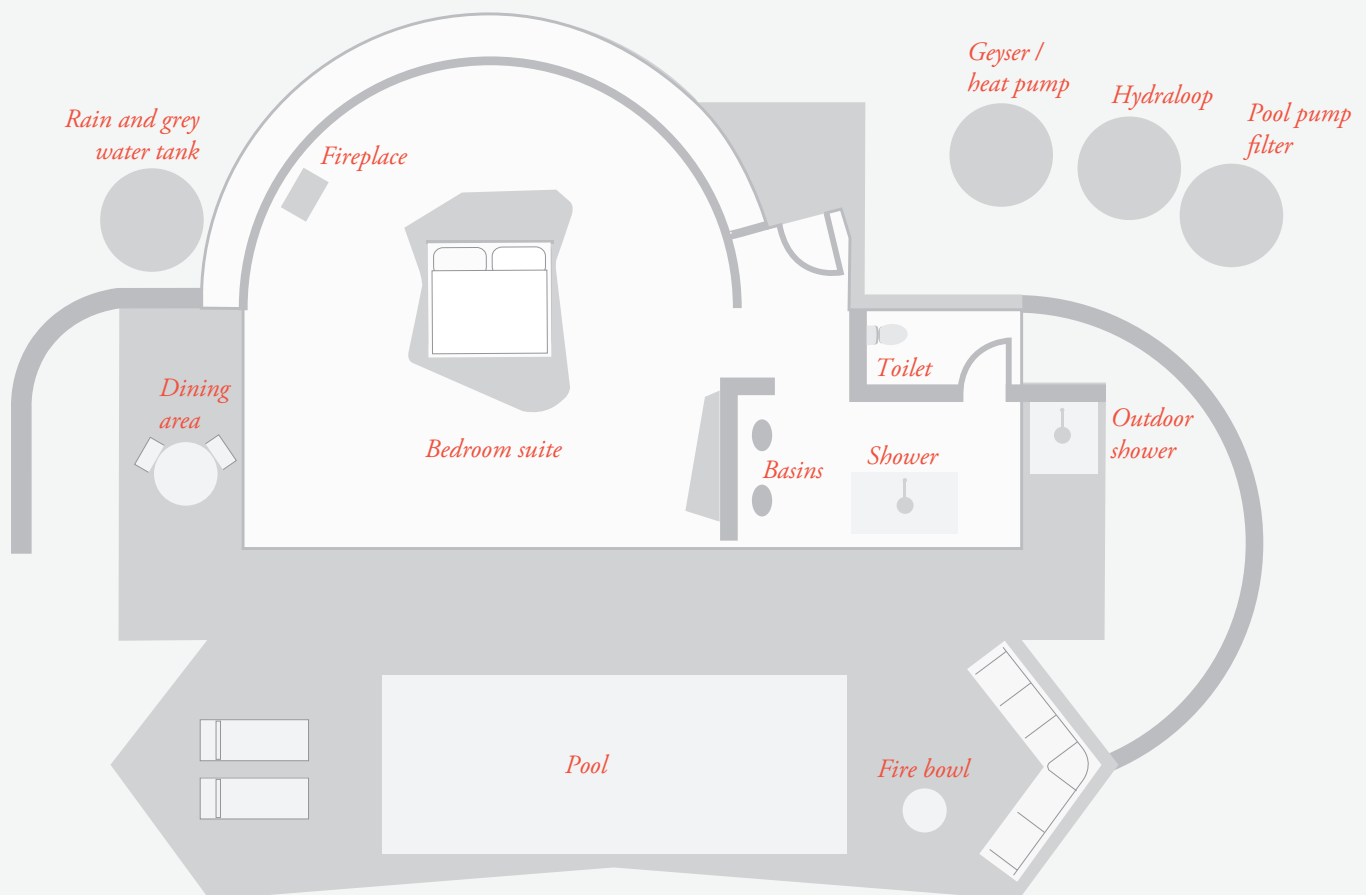
andBEYOND

ACCOMMODATION TYPES

SUITES

Designed to capture the splendour and solitude of the desert, beautifully appointed rooms spread out along the curve of the escarpment, allowing absolute privacy. Each air conditioned glass-fronted suite is designed to complement the expansive views of the different habitats, perfectly framed from the spacious internal areas. Featuring a private veranda, bedroom with retractable skylights for in-bed star-gazing, a living room with a fireplace, an ensuite bathroom with a glass-encased rain shower offering 180° views, and a perfectly-positioned private plunge pool for some sublime respite after a long day in the desert heat.

All suites include star-viewing skylights, discrete music systems and customised personal bars. One of the most innovative features of the accommodation design is the way in which the extremes of the natural environment are harnessed to create energy and recycle waste water. Each suite is like its own solar power plant, producing enough energy to not only power the air conditioning, and all the super-comforts of a luxury lodge, but also the water treatment and recycling systems.





FAST FACTS

SUITES

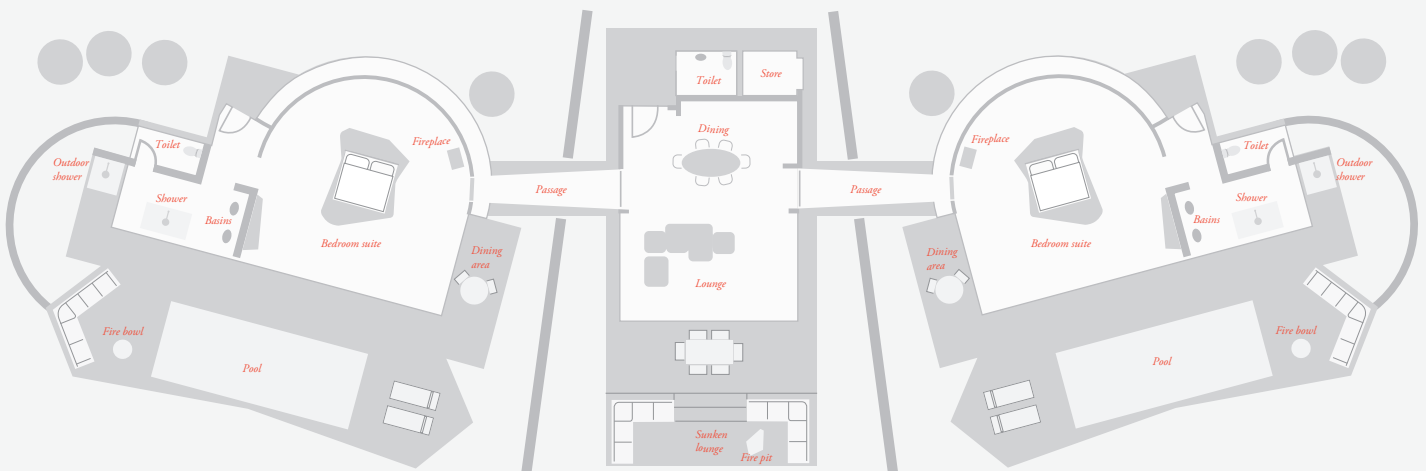
NUMBER OF SUITES	10
MAXIMUM GUESTS	20
SIZE	130m ² (1 400ft ²)
CHILDREN	Yes
CHILDMINDING	Available at an additional cost
GUIDE'S ACCOMMODATION	Available
WILDCHILD PROGRAMME	Yes
TRIPLES	One (only for children 16 years or younger)
TWIN BEDS	Two suites convertible to twins
OVERHEAD FANS	Yes
PRIVATE PLUNGE POOL	Yes
BATH	No
INDOOR SHOWER	Yes
OUTDOOR SHOWER	Yes
SEPARATE W.C	Yes
IN-ROOM SAFE	Yes
PERSONAL BAR	Yes
TELEPHONE	Yes
HAIRDRYER	Yes
LAUNDRY INCLUDED	Yes
WHEELCHAIR ACCESS	Not recommended, but possible with assistance
DISTANCE BETWEEN SUITES	20m (65ft)
CHECK IN / CHECK OUT	14h00 / 11h00
POWER	220v AC
INTERNET ACCESS	Yes, Wi-Fi in guest suites
PRIVATE VEHICLES	No
PRIVATE DINNERS	Yes
CREDIT CARDS	Visa, MasterCard
MASSAGE TREATMENTS	Yes
MALARIA	Situated in a malaria-free area
AIRSTRIP	Private gravel airstrip; coordinates are 24 ° 48'11" S and 15 ° 53'29" E
GPS COORDINATES	S24 ° 48.017' and E15 ° 53.490'
LODGE CLOSURE	None
LINK FOR MORE IMAGES	iBrochure

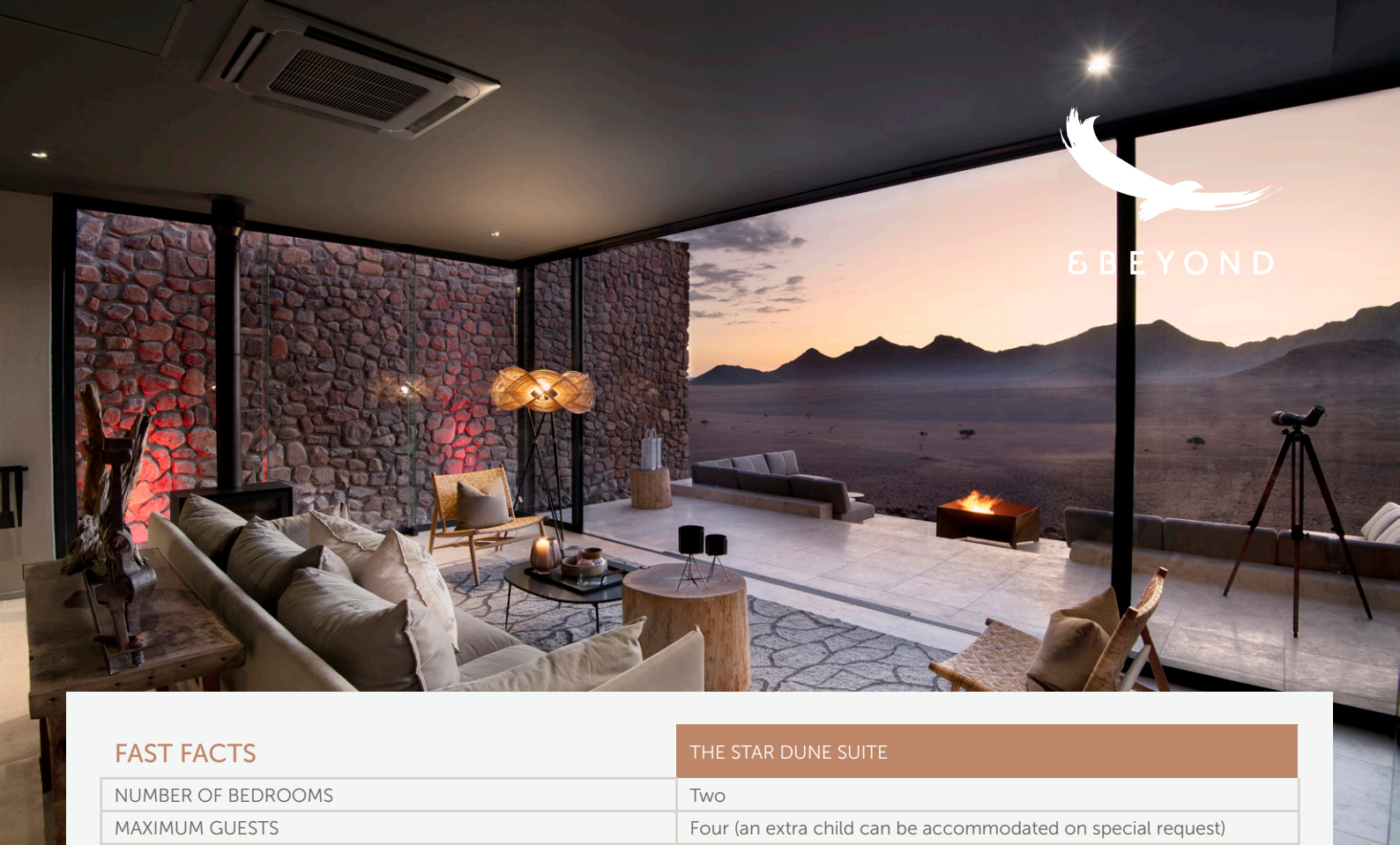
ACCOMMODATION TYPES

THE STAR DUNE SUITE

Creating an ideal family environment, or an ideal option for groups of friends, the Star Dune Suite consists of two suites linked by a covered walkway, with a private lounge and dining space. The combined amenities of this extended accommodation provide the perfect space for one and all to enjoy. For those family groups, our E Beyond guides and lodge team will provide a host of fun and interactive children's activities.

All suites include star-viewing skylights, discrete music systems and customised personal bars. One of the most innovative features of the accommodation design is the way in which the extremes of the natural environment are harnessed to create energy and recycle waste water. Each suite is like its own solar power plant, producing enough energy to not only power the air conditioning, and all the super-comforts of a luxury lodge, but also the water treatment and recycling systems.





FAST FACTS

THE STAR DUNE SUITE

NUMBER OF BEDROOMS	Two
MAXIMUM GUESTS	Four (an extra child can be accommodated on special request)
SIZE	267m ² (2 875ft ²)
CHILDREN	Yes
CHILDMINDING	Available at an additional cost
GUIDE'S ACCOMMODATION	Available
WILDCHILD PROGRAMME	Yes
OVERHEAD FANS	Yes
PRIVATE PLUNGE POOL	Yes
BATH	No
INDOOR SHOWER	Yes
OUTDOOR SHOWER	Yes
SEPARATE W.C	No
IN-ROOM SAFE	Yes
PERSONAL BAR	Yes
TELEPHONE	Yes
HAIRDRYER	Yes
LAUNDRY INCLUDED	Yes
WHEELCHAIR ACCESS	Not recommended, but possible with assistance
CHECK IN / CHECK OUT	14h00 / 11h00
POWER	220v AC
INTERNET ACCESS	Yes, Wi-Fi in guest suites
PRIVATE VEHICLES	No
PRIVATE DINNERS	Yes
CREDIT CARDS	Visa, MasterCard
MASSAGE TREATMENTS	Yes
MALARIA	Situated in a malaria-free area
AIRSTRIP	Private gravel airstrip; coordinates are 24 ° 48'11" S and 15 ° 53'29" E
GPS COORDINATES	S24 ° 48.017' and E15 ° 53.490'
LODGE CLOSURE	None
LINK FOR MORE IMAGES	iBrochure



FAMILIES AT &BEYOND SOSSUSVLEI DESERT LODGE

WILDChild PROGRAMME

The exciting &Beyond WILDChild Programme is filled with fun, interactive activities that offer opportunities to learn and discover new experiences and cultures. Deeply rooted in a love for African, it not only creates a series of unforgettable moments for the whole family, but forges strong bonds between our young guests, our planet and its people.

WILDChild ADVENTURES

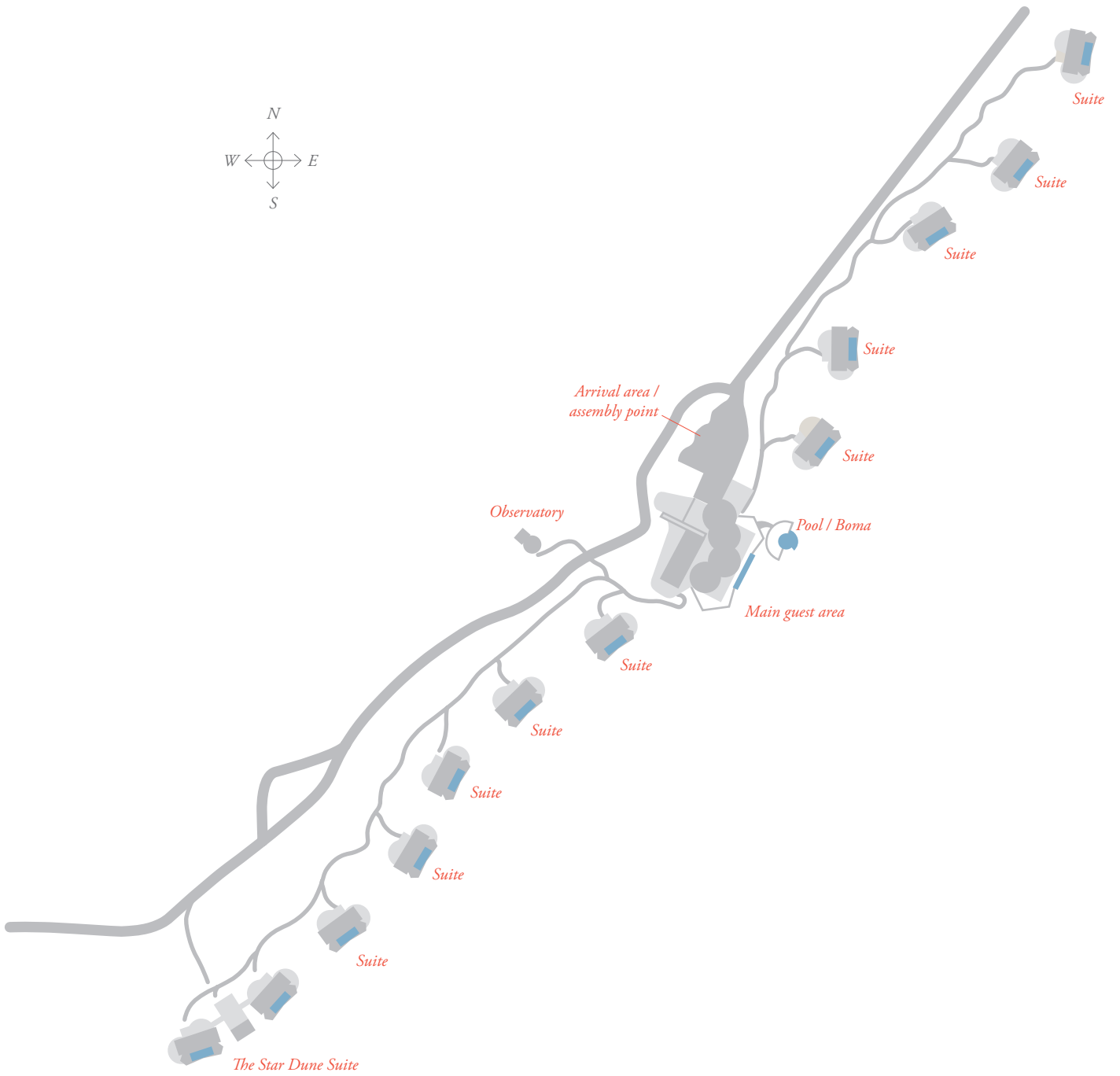
- Get creative with ostrich shell art and make necklaces and broaches, or mosaic a vibrant picture frame or bowl
- Revel in fine grains of silky sand as you enjoy sand painting with red dune sand, and paint pictures or fill glass bottles decoratively. Learn about dune history and ecology while you play
- Enjoy San rock painting, and make bookmarks and fridge magnets with san art designs. Potato printing for the younger kids in San art designs is also available
- Delight in monkey ball art and make your own monkey ball designs, using the local fruit as a canvas
- Explore space, and craft solar system mobiles or bottle lid planets as hats for children (under 10), or be absorbed in an astronomy session with an astronomer (for older children)
- Be enchanted with storytelling and listen to traditional stories about the night skies from African tribes

CHILDREN'S ACTIVITIES POLICY AT &BEYOND SOSSUSVLEI DESERT LODGE

AGE OF CHILD	ACTIVITIES PARTICIPATION
0 – 5 years	<ul style="list-style-type: none"> • Not permitted on lodge activities • Additional desert drives may be requested for children 3 - 5 years
6 – 15 years	<ul style="list-style-type: none"> • Permitted on lodge activities excluding the use of quad bikes on the Desert Spirit experience (6 - 12 years at the lodge manager's discretion)
16 years and older	<ul style="list-style-type: none"> • Permitted on quad bikes as part of the Desert Spirit experience

Childminding available at an additional cost

LODGE LAYOUT



AWARDS



2018

&Beyond Sossusvlei Desert Lodge
Namibia's Leading Safari Lodge at
World Travel Awards 2018



2013

&Beyond Sossusvlei Desert Lodge is
awarded a Tripadvisor Certificate
of Excellence



2018

&Beyond Sossusvlei Desert Lodge
listed as #13 in Handelszeitung
magazine's Top 20 Best Safari
Lodges for Adventures



2013

&Beyond Sossusvlei Desert Lodge
listed as #69 in the Collector's
edition of International Traveller
Magazine's 100 Best Hotels and
Resorts in the World



2016

&Beyond Sossusvlei Desert Lodge
wins the award for Namibia's Leading
Safari Lodge at the World Travel
Awards



2013

&Beyond Sossusvlei Desert
Lodge becomes Namibia's
first Virtuoso property