




SNOW LEOPARD EXPEDITION

India

11 Days/ 10 Nights



 facebook.com/andBeyondTravel

facebook.com/andBeyondAsia

 instagram.com/andBeyondTravel

instagram.com/andBeyondAsia

 twitter.com/andBeyondTravel

 andBeyond.com/stories

Let your imagination soar

About andBeyond

andBeyond is a pioneering, experiential travel company that offers forward-thinking, global travellers an exclusive experience of the world as it should be; a world that is in balance with itself. We go beyond mere luxury to enrich your guests' experience through our core ethos of Care of the Land, Care of the Wildlife, and Care of the People. andBeyond has 30 exquisite safari lodges and camps across Africa and South America, and we also design personalised, high-end tours in 15 African countries, India, Bhutan, Sri Lanka, Nepal, Chile, Argentina, Ecuador and Peru.

Welcome to India

India is the world's largest democracy and covers an area of 3,287,263 sq km, stretching from the high Himalayas in the North, to the southern tropical rain forests and flanked by the Arabian Sea in West and The Indian Ocean in the East. In the shape of a triangle, India's topography is greatly varied in that there are deserts and rain forests, much of its land is comprised of fertile river plains and high plateaus. A vast subcontinent of over 1.2 billion people and contains more different languages, religions, races and cultures than any other country in the world. India offers the traveler a multitude of unique experiences ensuring an unforgettable visit. From the vibrant and bustling markets and extravagant festivals to the serenity of a mountain retreat, India is a destination that will touch your soul.

Highlights of the Itinerary:

- The isolated barren wilderness of Ladakh with the snow-capped Himalayas mountains, bright blue water lakes, ever-changing sand dunes reminds that you are on the "Roof of the World".
- Enjoy the company of one of the most seasoned Snow Leopard Guide on the entire trip.
- Opportunity to see animals like Snow Leopard, Ibex, Tibetan Antelope, Blue Sheep, Shapo, Tibetan Hare



The Trans-Himalayan region of Ladakh is one of the last frontiers for wildlife tourism. A winter trip meets the elements head-on in a stunning and apparently bleak landscape. But within these high valleys created by folds of the Great Himalaya is perhaps the highest density of the most elusive of the great cats - the snow leopard. The very name evokes all that is most wild, mysterious and elusive in nature - for this is an animal that comes cloaked not just in the subtle beauty of its own coat but also in all the high drama of the harsh and magnificent environment that it dominates. The Ladakh region is a high altitude cold desert and for the snow leopard to survive it has a prey base of bharal (blue sheep), ibex and marmots. Wolves, foxes and wild dogs are other predators in the same area.

An attractive contrast also lies between these stone-hard mountain people and the gentle and compassionate Buddhism that they practice. You will have time to visit some of their great monasteries as well as their picturesque villages. Small settlements of Tibetan farmers and their livestock occupy isolated villages on the valley floors.

Please note: Please do note that the trek route is one that is based on experience of your leaders and they have full discretion to change it or alter it as per their wish. The weather will also be a crucial factor in deciding which places will eventually be visited and what will be dropped from the program.

The majority of time in Ladakh is spent at elevations of 11,800 feet or higher, with the highest sleeping altitude at 13,000. Anyone with a history of medical problems, particularly cardiac or respiratory, should consult a doctor before considering this trip. We always require a release of liability and medical certificate from our clients.

Specially created for

Wildlife enthusiasts, Photographers



At a glance

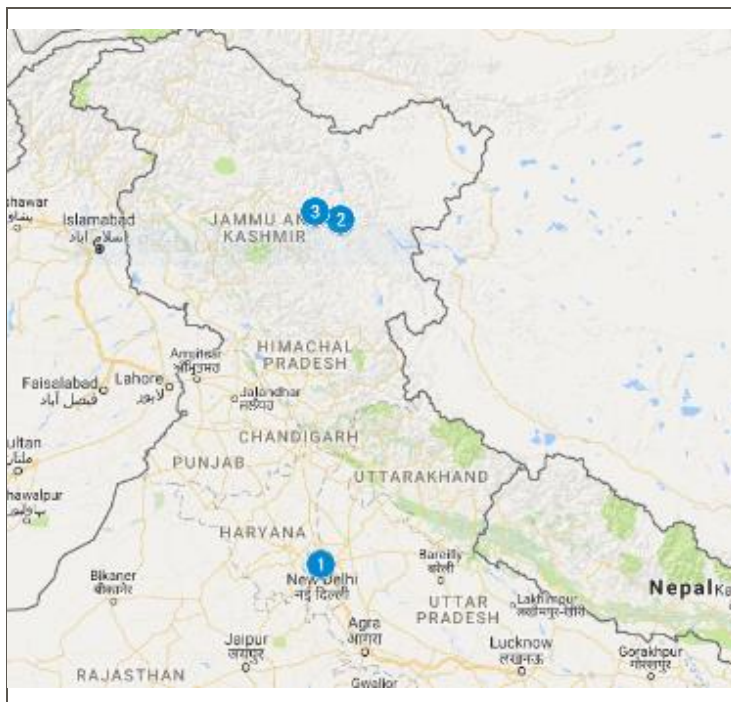
AN &BEYOND CUSTOM-DESIGNED ITINERARY		
DATE	SERVICE	ACCOMMODATION
DAY 1	Meet and Greet at New Delhi's International Airport	
	Transfer from Delhi airport to the Hotel	
	01 Overnight in Trident Hotel, Gurgaon	Superior Garden view Room - BB
DAY 2	Early morning flight to Leh Baggage allowance 15 Kgs per passenger - (Economy Class).	
	Arrive Leh and transfer to the Grand Dragon Hotel	
	Rest of the day is at leisure to acclimatize	Premier room -Meals Included
DAY 3	Half day sightseeing in and around Leh	
DAY 4	Check out and drive 2 hrs 30 mins to the Snow leopard lodge in Ulley.	Standard Room - Meals Included
DAY 5-9	Explore Ulley looking for Snow leopard and other animals found in this region	
	Overnights Snow Leopard Lodge	
DAY 10	Drive back to Leh enroute visiting Alchi Monastery	Premier Room- Meals Included
Day 11	Morning transfer to Leh Airport for flight back to Delhi (Baggage allowance 15 Kgs per passenger -Economy Class).	
	On arrival in Delhi you will be met and transferred to the Trident Hotel, Gurgaon - Day use room followed by drive back to international airport in the evening for flight back home.	Superior Garden view room - Room only basis
GLOSSARY		
BB = Bed and breakfast		
FI = Fully inclusive		

ENTRY/VISA REQUIREMENTS

- As for all international travel, the visitor to India is required to be in possession of a valid passport and visa. Travellers from all countries need a visa. Enquire about this from the Indian diplomatic Representatives abroad OR apply online at <https://indianvisaonline.gov.in/visa/tvoa.html>
- ***Boarding or immigration can be denied if there is a mismatch of passport details mentioned on the visa letter issued by the Government of India and the passport presented at these checks.***
- The passport has to be valid for a minimum of 6 months AFTER the departure date from India and at least 2 (two) clear pages available in the passport for immigration stamping.
- SATELLITE PHONES & DRONES ARE NOT ALLOWED IN INDIA

“The Government of India has banned the use of Satellite Phones and Drones across the country - it is a criminal offence to be in possession of such a phone and use of the same as well in India.”

Tour Plan - India



10 nights / 11 days

1 - New Delhi (Day 1)

2 - Leh (Day 2,3,10)

3 - Ulley (Day 4, -9)

Expect the extraordinary

Day 1- New Delhi

Upon your arrival in bustling Delhi, you will be warmly welcomed by a representative from &Beyond. Afterwards, you will be chauffeured to the Trident hotel, Gurgaon

In the heart of bustling Gurgaon, Delhi NCR, lies an oasis where you can smell the fresh grass, hear the birds sing and simply pause for pleasure. Trident, Gurgaon welcomes you in its warm embrace with magnificence and style.

Designed by Thai architect, Lek Bunag, Trident, Gurgaon is low-rise and spread over seven acres. The hotel blends the natural elements and luxury of space, water and light into its design. You will also find influences of Moroccan, Mughal and Rajasthani style in its architecture. The beige dome-like traditional exterior houses 136 contemporary rooms and suites, furnished with all the modern amenities for discerning guests, including complimentary high speed Internet for up to four devices. Trident, Gurgaon ranks amongst the best hotels in Gurgaon, Delhi NCR.

Spend overnight at the Trident Hotel, Gurgaon Accommodation is in a Superior Garden view Room. Your stay is on bed and breakfast basis.



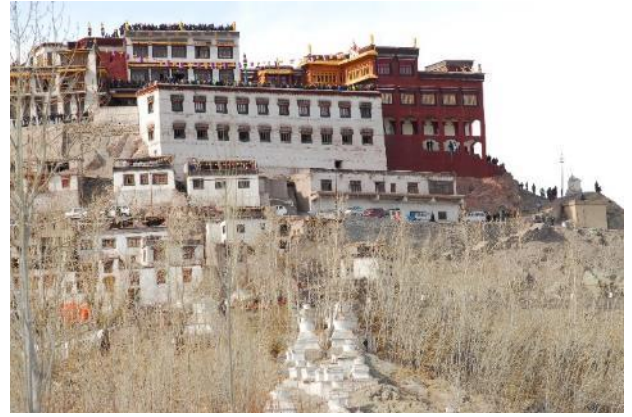
Day 2 - New Delhi/Leh

This morning you will be met and transferred to the Delhi airport for your flight to Leh. Upon arrival at Leh Airport you will be met by your expedition leader and transferred to your hotel.

Located in the heart of the ancient city of Leh, The Grand Dragon Hotel, Ladakh is amongst the first luxury hotels in Ladakh. The hotel is decorated magnificently with handmade paintings by Gulam Mustafa (First modern Artist of Ladakh) around every corner, and fixtures that are reminiscent of royalty. The entire hotel is wheelchair accessible, for providing differently abled guests with a comfortable sojourn.

The hotel is also centrally heated and solar powered, not only ensuring warmth but also ensuring that all the services are eco-frien Rest of the day is at leisure to acclimatize to the high altitude and rarefied air. Leh is at 11400 feet and the flight up from the plains means that you have to acclimatize gently without pushing yourself.

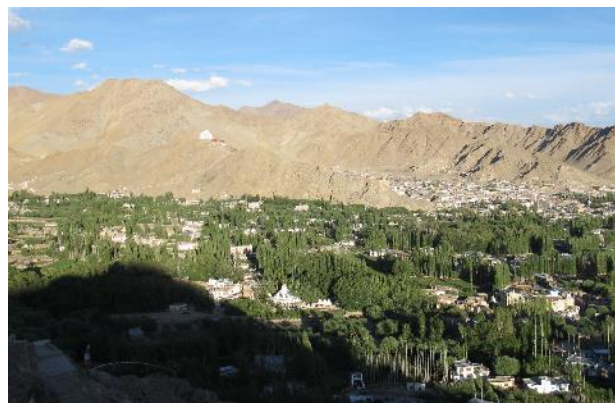
The 2 days scheduled here is the minimum required as you will be going to a higher altitude and will be doing a fair amount of walking. At some point over the next few days in Leh, meet with staff from the Snow Leopard Conservancy for a briefing on the history of snow leopard conservation in Ladakh with insight given into the current threats to snow leopards and the strategy's adopted to combat these threats.



Day 3 - Leh

Today you set out for an extraordinary drive East heading towards Taglang La and the villages of Gya, Lhato and Meru. It's a fantastic drive taking you away from the valley of the Indus up a subsidiary valley to an extraordinary area even by Ladakhi's standards that marks the line where the Indian mainland collided with and drove under Asian land mass. There is some dramatic scenery here and you have a chance of sighting wildlife including Blue sheep, Golden eagles and Bearded vultures. Rafts of Red-billed Choughs perform synchronized aerobatics and in the fallow fields you have the chance of seeing the very beautiful Tibetan Partridge and the more common Chukor partridge.

Overnight in Leh.



Day 4 -9 DRIVE TO ULLEY

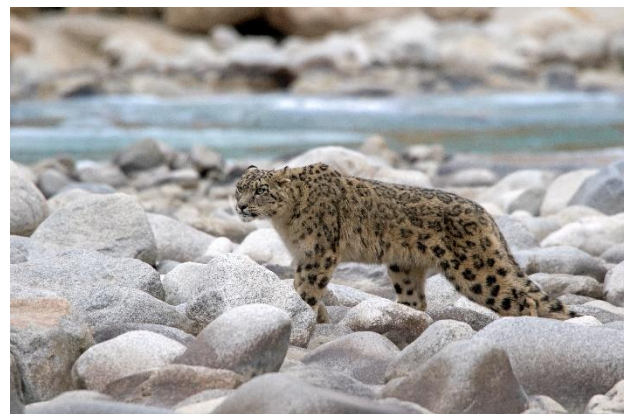
Drive west today on the road to Kargil and Srinagar, generally following the Indus River. You pass through the small town of Nimmu - one of the most important in Ladakh, where the Zaskar river meets the Indus. After a little over an hour you head north on a road marked to Likiir - one of Ladakh's famous Buddhist monasteries. This is all snow leopard country. The landscape here is even bigger, more expansive and open, until you turn off onto a dirt road, winding up a narrow valley, following a stream called the Ulley Chhu. Smaller valleys intersect and the guides have their heads craned all the time, scanning the hill sides and the skyline for any silhouette. This is excellent Ibex country and there are few more evocative sights than a magnificently horned male Ibex standing vigil on some impossibly narrow outcropping, a few thousand feet over a plunging cliff.

You will be staying at the Snow Leopard Lodge in Ulley - The home stay consists of 6 bedrooms, built separately from the main house with a dining room and kitchen - all in the same low stone built building. Add to this the interest of living with a Ladakhi family in the depths of winter and understanding their life-style and you have a very special experience in store - especially sharing the large and warm kitchens that are the heart of a Ladakhi home in winter and resplendent with brass, copper and silver ornaments.

Settle in on arrival and acclimatize to the higher altitude of Ulley. You will be based here over 6 nights. You will explore 3 valleys, which, apart from snow leopards, are great for finding urial, Ibex, wolf and Himalayan fox.

Over the next few days you explore the area on foot and SUV's with your expert guide. You will be amazed at the sheer dedication and commitment he brings to his trade and the effort he makes to ensure that his guests leave happy. Your guide will interact closely with the local people and use the network of local intelligence to narrow down the likely sites. In the process there will also be plenty of opportunity for you to get insights into local folklore, as well as learn about local customs and traditions.

Overnight stay at Snow Leopard lodge.



Day 10 - Ulley/Leh

This morning, after breakfast, we say our goodbyes to our host and drive back to Leh town. En-route we visit the Alchi monastery. Alchi Gumpa is located near the small village of Saspol. It is one of the earliest monasteries built in Ladakh, dating from the 11th century. Because it was built before the invading wars began in the 15th century, Alchi was built on lowlands, rather than on a hilltop as others were, in order to protect them from marauding armies.

After the visit, we carry on our journey to Leh.

Spend one overnight at Grand Dragon. Accommodation is in a Premier Room with ensuite facilities. Your stay includes meals.

Day 11 - Ulley/ Leh/ Delhi

Today connect to your morning flight to Delhi. Upon arrival, you will be driven to the Trident Gurgaon Hotel (close to the airport), where you can freshen up before your homeward flight later this evening.



Journey overview

DEPARTURE DATES FOR 2023 & 2024

<u>START DATE</u>	<u>END DATE</u>
16 NOV 2023	26 NOV 2023
24 FEB 2024	5 MARCH 2024
4 APRIL 2024	14 APRIL 2024
16 APRIL 2024	26 APRIL 2024

QUOTE PER PERSON IN USD (BASED ON A MINIMUM OF 4 GUEST AND A MAXIMUM OF 8 GUESTS TRAVELLING) ON TWIN SHARE

RATES PER PERSON ON SHARING BASIS	
4 GUESTS	7862 USD PER PERSON
6 GUESTS	7206 USD PER PERSON
8 GUESTS	6960 USD PER PERSON

SINGLE ROOM SUPPLEMENT USD 2650 PER PERSON

Flights

DATE/DAY	FROM/TO	FLIGHT NUMBER	TIME
Day 2	Delhi to Leh	TBA	TBA
Day 11	Leh to Delhi	TBA	TBA

Accommodation

DATE	DESTINATION	ACCOMMODATION	DETAILS
Day 1	New Delhi	Trident Gurgaon Hotel	Superior Garden view Room Bed & Breakfast
Day 2/3	Leh	Grand Dragon	Premier Room Meals Included
Day 4- Day 9	Ulley	Snow Leopard Lodge	Standard Room Meals Included
Day 10	Leh	Grand Dragon	Premier Room Meals Included
Day 11	Delhi	Trident Gurgaon Hotel	Superior Garden view Room - Room only

What's included:

- Meals as mentioned in itinerary
- Internal flights in economy (Baggage Allowance 15 Kgs per passenger)-Guest can pre-purchase excess baggage on request at an extra cost.
- Day 1 in Delhi hotel on Bed and Breakfast
- All sightseeing activities in Ladakh as mentioned.
- Entrance fee in monasteries
- Transportation for snow leopard sightings
- Donation fee for snow leopard conservation
- Services of a Tour leader from Day 2-10 in Ladakh only
- Visit to Snow Leopard Conservancy

What's not included:

- Any International Airfare / Airport taxes
- Any change in tax structure resulting from the hike in published tariff.
- Any expenses of personal nature including alcohol, laundry, gratuities etc.
- Medical /Travel Insurances
- Any expenses arising due to unavoidable circumstances beyond our control.

The Details are in the fine print The Details are in the fine print

Errors and Omissions Excepted

andBeyond Asia shall not be liable for any inadvertent delay in the issuing of an invoice or any supporting document related thereto (i.e. quotations, proposals, etc.) , or any omission or error contained in such invoice or supporting document provided that such delays, errors or omissions be rectified by andBeyond as soon as reasonably possible after the discovery of the same.

Covid 19 andBeyond Disclaimer and Liability

When travelling with &andBeyond your safety is of paramount importance to us. We have implemented various Covid -19 related safety measures, processes and procedures ("Infectious Diseases: Health and Safety Protocol") at our lodges and camps to ensure we create an environment that is both safe and hygienic when you stay with us, which protocol was developed by taking guidance from guidelines and hygiene policies prescribed and published by the World Health Organisation, the South African National Department of Health and the National Institute for Communicable Diseases of South Africa and all the relevant health authorities of the destinations we operate in. Should you wish to view our Infectious Diseases: Health and Safety Protocol, please request this information from any of sales or reservation team and we will share this information with you.

Your itinerary may include accommodation services at properties (i.e. accommodation at non andBeyond branded lodges and /or camps) and / or ancillary services such as transfers, tours, and activities that will not be provided by andBeyond Asia but by independent third party owners and / or operators that are not owned and / or managed by andBeyond Asia ("Third Party Service Providers"). Whilst all Third Party Service Providers of andBeyond Asia have committed to implement

similar processes and procedures as to our Infectious Diseases: Health and Safety Protocol to try and protect guests making use of their services, and Beyond Asia is not in a position to validate or dictate their health and safety protocols which will vary between Third Party Service Providers. As a result we cannot confirm the standard to which Third Party Service Providers protocols adhere to and as such we cannot accept any form of liability (in the broadest terms) should you (or any member of your party) contract an infectious disease (including Covid-19) when using the services of a Third Party Service Provider. The same will apply in respect of public areas (i.e. landmarks, public venues, sightseeing venues, etc.) which you may wish to visit whilst staying at either our lodges / camps or properties owned by Third Party Service Provider as neither and Beyond Asia nor Third Party Service Providers have any control over health and safety protocols followed at public areas or any action(s) of a member of the public which may cause an infection of an infectious disease.

As with any protocol the measure of success in implementing a process or procedure under a protocol will be determined by the level of compliance and adherence to the relevant processes and procedures prescribed by the relevant protocol. Whilst and Beyond Asia will ensure full compliance by its management, employees and contractors with the Infectious Disease: Health and Safety Protocol, and Beyond cannot accept any liability in the event of a guest(s) contracting an infectious disease (including Covid 19) as a direct or indirect result of complying or adhering to and Beyond Infectious Diseases: Health and Safety Protocol.

- Prices are subject to change as per change in Government / Hotel / Airline policy without prior notice.
- Rates include only those items specified in your itinerary.
- Please note, the names of hotels mentioned in our proposal only indicate that our rates have been based on usage of these hotels. It is not to be construed that accommodation is confirmed at these hotels until and unless we convey the confirmations to you on receipt of your acceptance. However in the event of any of the above mentioned hotels not becoming available at the time of initiating the reservations, we shall book alternate accommodation at a similar or next best available hotel and shall pass on the difference of rates (supplement/reduction whatever applicable) to you.
- Hotel Check-In 1400 hours, Check-out time 1200 NOON
- In case on any currency fluctuations or amendment in local Government taxes, or any fuel hike, we reserve the right to adjust the tour price accordingly. The due increase or decrease will be communicated accordingly.
- Until such time as confirmation of services is received from &Beyond Asia this is a Quotation only and is subject to availability as no reservations have been made.
- The rates quoted are subject to change without prior warning, should there be any increases in Park Fees, Fuel, Sales Tax or VAT, third party services, or any other circumstances beyond our control in the regions featured in this quote/booking.
- All guests must take out comprehensive travel insurance covering them for personal effects, personal accident, medical and emergency travel expenses, cancellation and curtailment.
- In order to comply with international insurance requirements all airline tickets must clearly show the passenger's title, surname, name and initial (as indicated in their passport). As this applies to both scheduled and charter flights we would be grateful if you could provide us with this information at the time of confirmation. Your internal flights have been organized by us. While we take the maximum care to ensure a safe and comfortable journey for you &Beyond Asia is not responsible for the fitness of the carriers or the safety standards of the carrier company.
- In order to comply with International Insurance requirements &Beyond Asia can only reserve seats, be it on a provisional or confirmed basis, on both domestic/scheduled or charter flights.
- Please note that airfares may increase between time of booking, time of payment and the ticket being issued. Any costs incurred due to amendments will not be borne by &Beyond Asia.

- &BeyondAsia cannot be held responsible should airlines discontinue flights on certain routings or change scheduled timetables, resulting in missed connections etc. Should an amendment in a routing or itinerary be necessary we will re-quote you accordingly
- Dietary Requirements: All dietary requirements can be catered for. When making your reservation, please advise us of any specific dietary requirements that you may have and these will be communicated through to the respective establishment.
- Gratuities: Tipping is at your discretion. However management of the establishment will be able to assist with

Booking made within 45 days of arrival	100% payment at the time of booking (within 72 hours) (non-refundable)
Booking made more than 45 days prior to arrival	25% payment at the time of booking (within 7 days) and balance 75% 60 to 100 days prior to arrival
Cancellation 60 days or more prior to arrival	No cancellation/ retention charge, except for cancellation fee on air tickets/ train tickets or deposits made for Game drives in National Parks.
Cancellation within 45 days of arrival	Retention of full deposit levied as cancellation charge

guidelines.

PAYMENT & CANCELLATION POLICY

1. **25% refundable advance payment to be remitted within 3 days on receiving confirmation for the hotels booked. However, cancellation penalties will apply on services booked like-air tickets/ train tickets or full deposits made for safaris in National Parks.**

&Beyond Asia reserves the right to cancel all services booked should full payment not be received 60 days prior to arrival date.

Should it be a last-minute booking, &Beyond Asia will allow for 3 days from time of confirmation until payment (100%) reaches us before &Beyond Asia will cancel any services booked. The amount is **NON- REFUNDABLE**.

Kindly note that payments may be processed with Visa and MasterCard credit cards. Payments may also be paid directly into andBeyond bank account details.

All payments received through credit card will attract an additional 2.50% transaction fee on the total invoice amount being paid.