

DISCOVER

&Beyond Phinda Private Game Reserve



&BEYOND





Seven worlds of wonder



The iconic Phinda Private Game Reserve encompasses an impressive 26 763 hectares (66 133 acres) of protected wildlife land in KwaZulu-Natal, South Africa. Showcasing one of the continent's finest game viewing experiences, the reserve is home to Africa's Big Five, and more than 436 bird species.

Why visit Phinda?

With its seven distinct habitats, Phinda is often described as ‘Seven Worlds of Wonder’, and is situated in close proximity to the unspoiled beaches and spectacular coral reefs of the Indian Ocean, offering an unmatched combination of bush and beach adventures.



1

EXCLUSIVE GAME VIEWING

26 763 hectares (66 133 acres) of private traversing across seven distinct habitats allows for a great diversity of landscapes and exclusive game viewing. Limited number of vehicles at sightings and sensitive off-roading practices affords close-up sightings of Big Five and other rare and iconic wildlife.

2

ICONIC WILDLIFE SIGHTINGS

♻️ Beyond Phinda is home to Africa’s Big Five (lion, leopard, elephant, buffalo and rhino), as well as more than 436 bird species. The reserve is particularly well known for close-up sightings of the elegant yet elusive cheetah, as well as the rare black rhino. The sand forest is home to the shy suni and the rare red duiker, two tiny antelope that are seldom encountered elsewhere.

3

FINEST GUIDES AND SAFARIS

Highly knowledgeable ♻️ Beyond-trained guides with the ability to do night drives, and other specialist safaris such as walking, tracking, photography or birding. Safaris can be tailor-made for private groups, families or specialist interests.

4

LIFE-CHANGING EXPERIENCES

A variety of incredible adventures are available, including twice-daily game drives, nature walks, conservation and community experiences, sleep outs, village tours, night drives, specialist safaris, as well as nearby ocean activities.

DISCOVER &BEYOND PHINDA PRIVATE GAME RESERVE

Why travel with &Beyond?

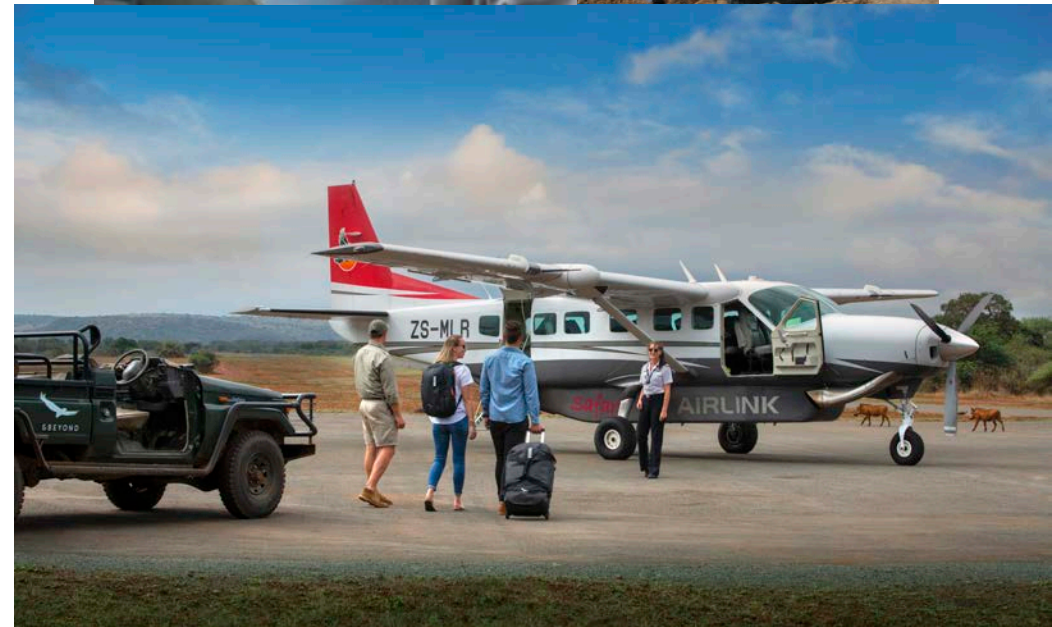
1 TRAVEL WITH HEART
Our core ethos of "Care of the Land, Wildlife & People" drives all that we do. When you travel with us you make a meaningful contribution to the preservation of our world's cultures and wildlife and leave with an opportunity to gain first-hand experience in some of our conservation and community initiatives.

2 IN OUR HANDS
We are on call 24/7 to assist you throughout your journey. Over 2000 &Beyonders, including guides and ground logistic teams on 3 continents, means that you are in our hands from the moment you arrive to the moment you leave. Additionally, we offer a personal concierge service that is only a phone call away should you require any assistance at any point during your trip.

3 FINEST GUIDES
We operate three ranger training schools and are renowned for having the most highly trained, professional and knowledgeable guides, rangers, naturalists and trackers, who offer cultural insights as well as interpretive wildlife experiences.

4 TRAVEL EXPERTS
Big or small we are all about tailoring trips around your specific interests and expectations. Our expert travel specialists are able to personalise a range of experiences for individual travellers, groups, families, wedding parties, and special interest groups.

5 PERFECT MOMENTS
With journeys lovingly crafted of perfect moments, you will return from an &Beyond adventure feeling that nothing will take your breath away quite like this ever again. Our collection of signature experiences are often exclusive to &Beyond, ensuring a unique adventure.



Wow! It so far exceeded my expectations that I am speechless. Every day was a new discovery. ”

&BEYOND GUEST

DISCOVER &BEYOND PHINDA PRIVATE GAME RESERVE

Travel South Africa and beyond

South Africa has an excellent travel network that makes it easy to reach any destination, by air or by road.



GETTING TO PHINDA

Airlink offer daily scheduled flights from Johannesburg to Phinda Private Game Reserve.

Connect Phinda Private Game Reserve to Johannesburg, Cape Town, Ngala Private Game Reserve, Kirkman's Kamp, northern Sabi Sand Game Reserve (Londolozi, Ulusaba) or to Vilanculos and Livingstone. All flights route through either Johannesburg, Nelspruit or Skukuza, where layovers may vary.

Private charters from anywhere in South Africa can be arranged to Phinda Private Game Reserve's airstrip.

More cost effective routes include a commercial flight to Richard Bay, followed by a two hour scheduled road transfer.

It is seven-hour drive from Johannesburg on good roads in a two-wheel drive vehicle

It is a three and a half-hour drive from Durban on good roads in a two-wheel drive vehicle.

TRAVEL TIMES

JOHANNESBURG						
	5hr 18min (466,3 km) *2hr 10min (45 min layover)	KRUGER NATIONAL PARK - NGALA PRIVATE GAME RESERVE				
	5hr 22min (452,1 km) *50 min	2hr 4min (89,4 km) *45min	SABI SAND - SOUTH (SKUKUZA AIRPORT) - KIRKMAN'S AND TENGILE			
	6hr 11min (488,1 km) *2hr 15min	1hr 18min (46,8km) *45min	1hr 51min (80 km) Not available	SABI SAND - NORTH		
	6hr 35min (533,8 km) *3h 25min (1h 25min layover)	8hr 48min (657 km) *2h 10min (20 min layover)	7hr 34min (590 km) *3h 20min (50min layover)	8hr 40min (636 km) *4hr 45min		
				PHINDA		
	14hr 14min (1 397,8 km) *2hr 10min	19hr 59min (1,907 km) *3hr 35min	19hr 33min (1849 km) *4hrs	20hr 53min (1890 km) *4hrs	20hr 31min (1830 km) *4h35 (45min layover)	CAPE TOWN

*Airlink flights may include layovers ranging from 20 minutes to 2 hours depending on routing. Return flight times may differ for this reason.

&BEYOND LODGES

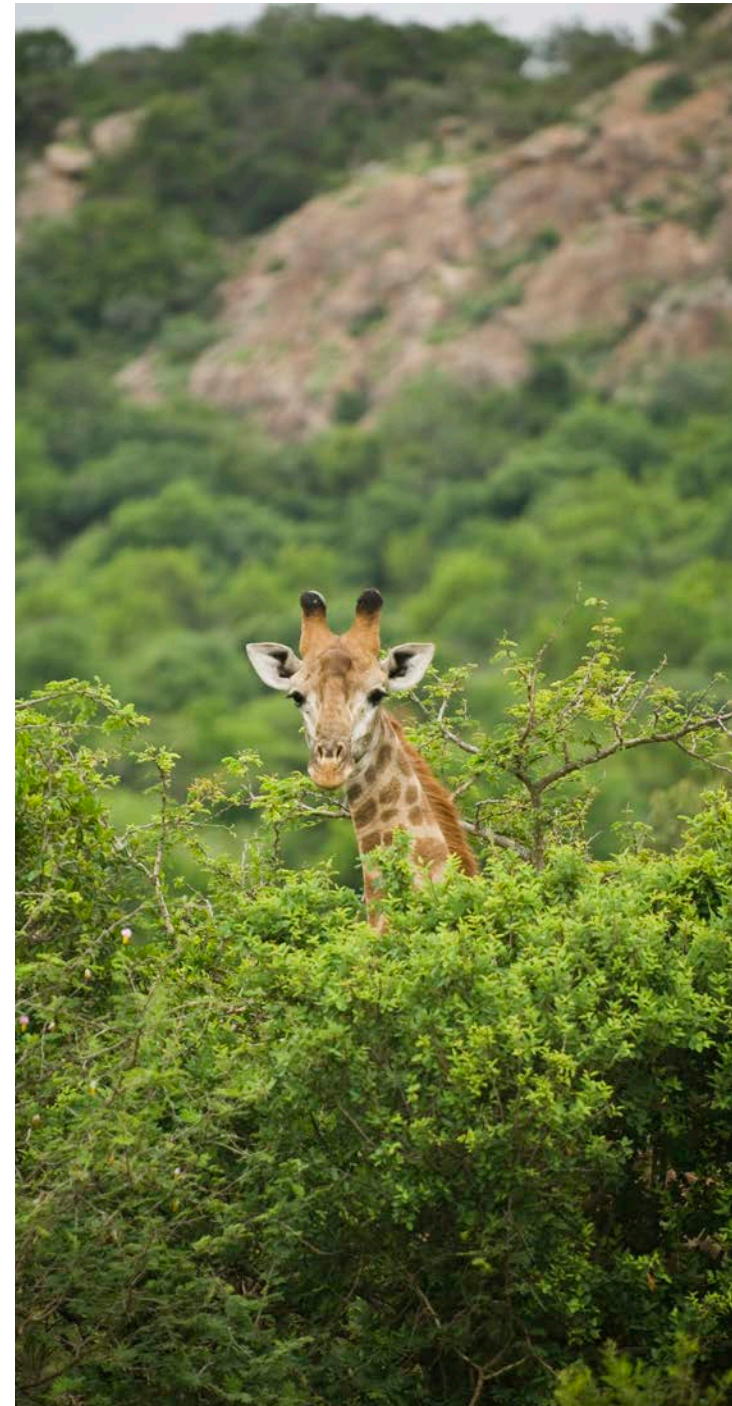
- 1 KRUGER NATIONAL PARK**
Ngala Safari Lodge
Ngala Tented Camp
- 2 SABI SAND GAME RESERVE**
Kirkman's Kamp
Tengile River Lodge
- 3 PHINDA PRIVATE GAME RESERVE**
Phinda Mountain Lodge
Phinda Forest Lodge
Phinda Rock Lodge
Phinda Vlei Lodge
Phinda Zuka Lodge
Phinda Homestead

Regional information

Altitude	48-112m / 157-367ft
Malaria area	The reserve is situated in a low-risk malaria area
Airstrip / Helipad	The Phinda airstrip is not registered; coordinates are S27°.51.36' and E32°.18.48'
GPS coordinates	S27°46.657' and E32°20.942'
Best time to travel	Game viewing and climate is excellent year-round
Weather	Subtropical climate with hot, humid and wet summers from September to April and warm to cool and dry winters from May to August.
Rainfall	Rainfall averages 1 000mm / 39" per annum. Much of the rainfall comes in the form of short, intense afternoon thundershowers. Rain can be expected throughout the year.
Temperature averages	Summer: daytime temperatures average between 25-35°C / 68-95°F

The staff took great care of everyone in the camp. The food was amazing, our driver was spectacular, and there were animals everywhere. ”

&BEYOND GUEST



Explore Phinda Private Game Reserve

VEGETATION ZONES

- Sand forest
- Sandveld woodlands
- Thornveld savannah
- Floodplain grassland
- Riparian
- Mixed Lebombo woodlands
- Palm veld

- ♻️ Beyond lodges
- Reserve main road
- Lake
- Rivers
- Water points
- Phinda airstrip
- Gate
- Scenic view points



A savanna landscape at sunset. In the foreground, a pride of lions is walking along a dirt path. In the background, several safari vehicles are visible, and the sky is a mix of pink, orange, and blue. The overall scene is a classic African savanna setting.

DISCOVER PHINDA PRIVATE GAME RESERVE

Adventures of a lifetime

Enjoy an unmatched combination of bush and beach adventures with a wide array of wildlife experiences, cultural encounters, and marine explorations.

DISCOVER &BEYOND PHINDA PRIVATE GAME RESERVE

Adventures of a lifetime

Safari adventures

An African safari is an experience of a lifetime, and there is so much on offer at &Beyond Phinda – from twice-daily Big Five game drives, to a range of private and specialist experiences.



1

SAFARI GAME DRIVES

Enjoy twice-daily game drives that set off early in the morning or late in the afternoon (continuing after nightfall), in the company of expert safari guides and local trackers who will do their best to ensure that all your wishes are met. In addition to the Big Five (lion, leopard, rhino, elephant and buffalo), each safari features an iconic set of wildlife and some of KwaZulu-Natal's endemic species.

Included in the rate

2

PHOTOGRAPHIC SAFARI

Designed for photography enthusiasts, our expert guides will use their extensive experience in wildlife, birding and landscape photography to help you get the shot of a lifetime by providing advice on shutter speed, lenses, filters, angles, lighting and so much more. Combining their understanding of animal behaviour with their photography skills, they will help you plan every step of your safari. A fully-equipped photographic safari vehicle fitted with state-of-the-art camera mounts is available and ensures exclusivity during your experience.

3

BIRDING SAFARIS

Birding Safaris are just one of &Beyond's many matchless private safaris that can be personalised for any small group. Accompanied by one of &Beyond's specialist birding guides, set out in search of the nearly-436 bird species that inhabit Phinda's seven diverse habitats including some of the more well-known ones, from the Rudd's Apalis to Neergard's Sunbird or Narina Trogon.

4

FAMILY SAFARI

Phinda offers a host of entertaining activities for children aged 3–12 years, bringing alive the magic of Africa. Whilst on a family safari, you can rest assured that your children will always be safe and well cared for (both on and off game drives). Every minute is supervised by our guides and lodge staff, who provide hours of amusement and invaluable information to the children in their care.

5

PRIVATE GAME DRIVES

A private safari at &Beyond Phinda Private Game Reserve allows you to explore the reserve at your own pace while focusing on your special interests. With your own dedicated ranger and tracker team, in your own private 4x4 safari vehicle, &Beyond's exclusive safaris let you create your very own tailor-made wildlife adventure.

6

SLEEPOUT UNDER THE STARS

Enjoy a magical setting in the middle of the bush – comfortable beds with full duvets and warm blankets, twinkling lanterns hanging from the trees. Be welcomed with sundowner drinks while your guide prepares a delicious meal on the fire. Recreate the day's adventures around the fire, and fall asleep under the starry sky to the sound of hyena calling in the distance, secure in the knowledge that an armed guard will patrol the site by night.

All specialist safaris (except your included twice-daily game drives) are subject to availability of a specialist guide and tracker. All activities are weather dependent. Certain activities are subject to an additional cost.

DISCOVER 8BEYOND PHINDA PRIVATE GAME RESERVE

Adventures of a lifetime

Guided walks and tracking

A guided nature walk is a magical alternative to a Big Five game drive. This adventure makes full use of all your senses, allowing you a deeper connection with the African bush.



1

NATURE WALKS

As part of a game drive, or a few hours over the middle of the day, a nature walk is an opportunity to connect with the African bush and experience it on the same level as its animal inhabitants. Watch birds, explore a dry river bed, walk in the footsteps of zebra or giraffe, sit in stillness in the shade of an ancient tree, unravel the stories behind animal tracks, or simply stretch the legs.

2

BIG GAME VIEWING WALKS

Led by an expertly-trained ranger and tracker team, a Big Game Viewing Walk offers the chance to track and view certain Big Five animals on foot. Done in such a way that the animals never know that you are there, Big Game Viewing Walks ensure an undisturbed natural experience viewing these creatures in their natural habitat while ensuring safety, as they never feel threatened by your presence.

3

SPECIALIST WALKING SAFARIS

Enjoy the excitement of a Big Game Viewing Walk, the tranquility of a Nature Walk, or any combination of the two, as your specialist ranger and tracker tailor your walking experience to suit your personal requirements and preferences. Whether it be to follow an animal for hours, unravelling the details of its daily life, or to spend the whole day exploring the wildest corners of the game reserve on foot, a Specialist Walking Safari offers the opportunity to experience Africa at its wildest and most personal.

4

BLACK RHINO TRACKING

Tread along the very paths black rhinos roam free on, and witness their lives from a careful distance. The slow pace of the walk and the interpretive skills of the experienced guide and tracker opens your eyes to a new and fascinating world. Learn how to follow rhino tracks, recognise rhino middens and scratching posts, and follow the signs of the bent trees and broken grass blades, searching for rhino in the company of wildlife professionals.

DISCOVER BEYOND PHINDA PRIVATE GAME RESERVE

Adventures of a lifetime

Conservation

EXPERIENCES



1

RHINO CONSERVATION

This adventure allows guests to participate in either the capture and darting of a black or a white rhino while the veterinary team notches the sleeping animal's ear for research and security monitoring; or to assist with the painless removal of both rhino horns in order to ensure their survival and protection against poachers.



2

PANGOLIN CONSERVATION

Participate in a privately guided pangolin research and monitoring experience, and you'll be supporting the conservation of the world's most trafficked mammal. In this interpretive and exclusive activity, guests will join a researcher as he locates one of the pangolins, does a general health check, and downloads critical research data from the UHF tag attached to each pangolin.



3

ELEPHANT CONSERVATION

Have the opportunity to witness either an elephant collaring, where guests change of the sleeping pachyderm's radio collar, or to witness an elephant contraception, where Phinda's conservationists actively manage their burgeoning elephant population.

Cultural

EXPERIENCES



1

ZULU VILLAGE TOUR

Be invited into an authentic Zulu homestead, visit the training school of a local sangoma, or traditional healer, and shop for exquisite handicrafts in the community surrounding &Beyond Phinda. Get a glimpse into the rituals of daily life and see how tribal culture and tradition affect rural Zulu villagers in the modern world, while helping them to gain an income.



2

AFRICA FOUNDATION COMMUNITY VISIT

Embark on an insightful tour with Africa Foundation and gain first-hand knowledge of their various projects, aimed at improving education, healthcare and access to water, as well as the development of local businesses in the area. You will have the opportunity to visit projects in the Mduku and Mnqobokazi communities, including the Khulani Special School, the Mduku Clinic, and the Mbhedula Craft Market.

DISCOVER 8BEYOND PHINDA PRIVATE GAME RESERVE

Adventures of a lifetime

Ocean adventures

Adding to Phinda's wildlife charms, the marine diversity of nearby Sodwana Bay is easily accessible, with exceptional scuba diving, fishing and even turtle watching listed as some of its main attractions.



1

OCEAN SAFARI

Whilst enjoying the exceptional Big Five 8Beyond Phinda, why not treat yourself to an Ocean Safari that offers a wonderful opportunity to encounter some of South Africa's beautiful marine life. This exciting adventure, aboard an inflatable vessel and in the company of a certified dive master, offers the prospect of encountering and swimming with wild dolphins, snorkelling amidst flourishing reefs and the chance to view humpback whales (seasonal).

2

MAPUTALAND BEACH ADVENTURE

The vast sandy beaches of the Maputaland coastline provide a beautiful setting for this halfday beach outing. There is ample time for guests to soak up the sun, splash in the warm waters of the Indian Ocean, relax with a good book, play beach games such as bat and ball, take leisurely walks along the shoreline, or snorkel alongside Jesser Point (a protected marine reserve) with its diverse and colourful marine life.

3

TURTLE NESTING ADVENTURE (SEASONAL)

For four months during the southern hemisphere summer, the enormous leatherback and loggerhead turtles emerge from the Indian Ocean at Sodwana Bay to lay their precious eggs in the sand. Set out on a thrilling night-time adventure along the beach in search of these reptilian animals as they come ashore to dig their nests.

4

INDIAN OCEAN SCUBA SAFARIS

Diving the reefs of Sodwana Bay allows you to experience a portrait of marine diversity, with approximately 1200 species of fish and spectacular coral formations. Guests wishing to participate must have dived in the last six months and have an Open Water 1 NAUI or PADI dive qualification.

DISCOVER &BEYOND PHINDA PRIVATE GAME RESERVE

Adventures of a lifetime

Year-round activities

- | | | |
|-------------------------------------|-------------------------------------|--------------------------------------|
| ✓ Game viewing | ✓ Family safari | ✓ Rhino notching experience* |
| ✓ Night drives | ✓ Private game drives | ✓ Rhino dehorning experience* |
| ✓ Boma dinners* | ✓ Birding safaris | ✓ Elephant collaring experience* |
| ✓ Big Five sightings | ✓ Healing Earth wellness treatment | ✓ Elephant contraception experience* |
| ✓ Safari Shopping / Ardmore Gallery | ✓ Explore Maputaland | ✓ Zulu village tour |
| ✓ Birding | ✓ Nature walks* | ✓ Local community visit |
| ✓ Weddings | ✓ Big game viewing walks* | ✓ Maputaland beach adventure |
| ✓ Bush dining* | ✓ Specialist walking safaris* | ✓ Ocean safari* |
| ✓ Photographic safari | ✓ Black rhino tracking | ✓ Deep sea fishing* |
| ✓ Sleepout under the stars* | ✓ Pangolin conservation experience* | ✓ Indian ocean scuba safaris* |

* Rain dependant

Eyes full of tears and hearts full of happiness in the best, time-honoured &Beyond traditions. Every detail meticulously planned and executed. It is impossible to exaggerate the brilliance of the experience you have given us. ””

&BEYOND GUEST



DISCOVER 6BEYOND PHINDA PRIVATE GAME RESERVE

Adventures of a lifetime

WILDchild

6Beyond Phinda Private Game Reserve offers a range of fascinating and entertaining activities for children aged 3–12 years, bringing alive the magic of Africa. Whilst on a family safari, you can rest assured that your children will always be safe and well cared for (both on and off game drives). Every minute is supervised by our guides and lodge staff, who provide hours of amusement and invaluable information to the children in their care.

WHY WE LOVE 6BEYOND'S FAMILY SAFARIS:

- Special WILDchild programme for children aged 3–12 years
- Each WILDchild receives a backpack filled with age-appropriate goodies
- Activities are seasonal and include bark rubbing, bug collecting, frog safaris, 'poo walks', baking with the chef and more
- Special children's menus available
- Child-minding services available at additional cost

CHILD POLICY*

0-2 years	Permitted on game drives at ranger's discretion. Not permitted on walks outside of the lodge.
3-11 years	Permitted on game drives. Not permitted on walks outside of the lodge.
12-16 years	Not permitted on walks outside of the lodge
16 years and above	Permitted on game drives and nature walks. Not permitted on Specialist Walking Safaris.

**The child policy applies to children participating on game drives when staying in a Family Suite or Family Cottage only, as private vehicles are included. Children that share a vehicle with other guests not in their party, may be subject to activities at the lodge manager's discretion.*



DISCOVER 6BEYOND PHINDA PRIVATE GAME RESERVE

Adventures of a lifetime

WILDchild

FAMILY ACCOMMODATION

Phinda Mountain Lodge

Children welcome
WILDchild programme

3 family cottages (consisting of 2 interleading suites each)
- Max 2 adults + 3 children

1 family suite (2 adult rooms + 2 child rooms)
- Max 4 adults + 4 children

Triple rooms available

Phinda Forest Lodge

Children welcome
WILDchild programme

Children in suites (max 2 people per suite)
No triple rooms available.

Phinda Vlei Lodge

Children welcome
WILDchild programme

Children in suites (max 2 people per suite)
No triple rooms available.

Phinda Zuka Lodge

Children welcome
WILDchild programme

Children in suites (max 2 people per suite)
Triple room available.

Phinda Rock Lodge

No children under 12 years
No WILDchild programme

Phinda Homestead

Children welcome
WILDchild programme

Additional children's room available with 4 beds (2 bunk beds).
Extra private vehicle may be required.



Please note that, due to the lodge not fenced off, children are required to have an adult accompanying them at all times.

DISCOVER PHINDA PRIVATE GAME RESERVE

Lodge overview



DISCOVER BEYOND PHINDA PRIVATE GAME RESERVE
Accommodation Overview

Our lodges on Phinda

BEYOND PHINDA MOUNTAIN LODGE

Poised majestically on a mountain crest, Mountain Lodge offers exceptional views over the entire reserve, as well as a warm, family-friendly atmosphere. Glamorous guest areas offer a dramatic vantage point over the Lebombo Mountains, while the spacious suites feature private verandas and private plunge pools. A warm and friendly welcome awaits families with children, with a family suite and three family cottages available.

BEYOND PHINDA ROCK LODGE

Suspended over the valley below, this cliff-top pueblo is an intimate and romantic refuge. Eagle's eye views and a feeling of utter seclusion combine with roughly hewn walls and chunky textures. Private plunge pools balance on the edge of a breath-taking precipice, while al fresco showers in the leafy growth give the illusion of bathing in your own waterfall. A roaring fire in the guest areas provides a gathering point for a maximum of just twelve guests.

BEYOND PHINDA VLEI LODGE

Overlooking an open marsh with its own watering hole, the small and intimate Vlei Lodge is a wildlife playground where the animal encounters are up close and personal. Elegant and serene, the gracious spaces of the lodge are romantic and totally private. Guests can watch the bush come to life from the seclusion of their suite or take a dip in their private lap pool.



FAST FACTS

Mountain Lodge

- 16 suites, 3 family cottages and a family suite
- Family friendly, WILDchild
- Fully quipped gym, massage sala and safari shop
- Lodge pool and private plunge pools (except family suite)
- Outdoor showers

Rock Lodge

- 6 suites
- Private plunge pools and outdoor showers
- Romantic rooftop dining
- Not suitable for children due to cliffside location

Vlei Lodge

- 6 suites
- Private plunge pools and outdoor showers
- Intimate lodge with magnificent views
- Large spacious suites

DISCOVER BEYOND PHINDA PRIVATE GAME RESERVE

Accommodation Overview

Our lodges on Phinda

BEYOND PHINDA FOREST LODGE

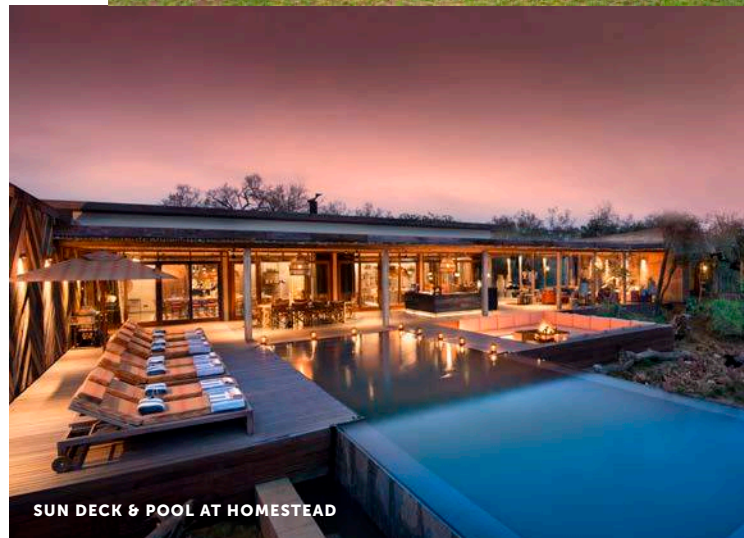
Secluded deep in the rare sand forest, the glass walls of Forest Lodge offer sweeping views of this unique ecosystem. Cradled in a maze of ancient vegetation, each contemporary Zulu Zen suite provides a tranquil space from which to watch a nyala, a tiny suni or a red duiker graze among the vines. In spite of the floor to ceiling glass, the towering torchwood trees and fertile forest floor create a complete sense of seclusion.

BEYOND PHINDA ZUKA LODGE

Booked either for sole-use or on a room-by-room basis, the intimate Zuka Lodge is sheer, cool comfort. Everything guests need is right within reach – comfortable library, sitting room with fireplace, swimming pool and four separate bush cottages. Guests can choose to join the group in a generous sitting room or indulge in laid-back moments in the private sitting area of your cosy bush cottage.

BEYOND PHINDA HOMESTEAD

A sole-use safari residence, The Homestead is an exclusive hideaway that blends laidback luxury with wildlife adventure. Stylish comfort, coupled with genuine hospitality from The Homestead's personal chef and butler, will have guests feeling at ease in this private villa. An interactive kitchen awaits guests' instructions, whether they're having their favourite meals prepared for them or being surprised at meal time. A dedicated ranger and tracker team will take guests out on game drive whenever they wish.



FAST FACTS

Forest Lodge

- 16 suites
- Large safari shop as well as Ardmore gallery
- Lodge pool
- Children welcome, but triples not possible

Zuka Lodge

- 4 suites
- Children welcome; highly recommended for families on sole-use basis
- One triple when booked on sole-use basis
- Lodge pool

Homestead

- Exclusive, sole-use safari villa
- 4 suites
- Highly recommended for families
- Lodge pool and outdoor showers
- Fully equipped gym and massage sala
- Children welcome, but triples not possible



DISCOVER PHINDA PRIVATE GAME RESERVE

Lodge comparison

A quick-reference comparison between the six unique lodges on Phinda, each with their own allure and mesmerising character.

WAMUKEKILE
E BOMA
YETHU

DISCOVER ♾️ BEYOND PHINDA PRIVATE GAME RESERVE

Lodge overview

Lodge comparison

	PHINDA MOUNTAIN	PHINDA ROCK	PHINDA FOREST	PHINDA VLEI
OVERVIEW				
Lodge experience	Large lodge, family oriented, modern with beautiful mountain and reserve views.	Small, intimate, romantic lodge with beautiful views. No small children permitted.	Large lodge, family oriented, canopied in the sand forest, quiet, peaceful.	Small, peaceful lodge in the sand forest with a classic luxury feel.
Maximum number of guests	50	12	32	12
Number of rooms	23	6	16	6
Family accommodation	1 family suite, 3 family cottages	None	None	None
WILDchild programme	Yes	No	Yes	Yes
Room types	Mountain suites and cottages	Mountain cottages	Glass suites	Suites
Distance between rooms	Approx. 15m (50ft)	Approx. 10m (33ft)	Approx. 15m (50ft)	Approx. 25m (82ft)
FACILITIES				
Power	220v AC	220v AC	220v AC	220v AC
Internet access	Yes, Wi-Fi in rooms and guest areas	Yes, Wi-Fi in rooms and guest areas	Yes, Wi-Fi in rooms and guest areas	Yes, Wi-Fi in rooms and guest areas
Wine store or cellar	Yes	No	No	No
Boma	Yes	No	Yes	No
Interactive kitchen	Yes, including a pizza oven	No	Yes	No
Swimming pool	Yes	No	Yes	No
Wellness offering	Healing Earth treatments offered in-room or in the massage sala	Healing Earth treatments offered in-room	Healing Earth treatments offered in-room	Healing Earth treatments offered in-room
Fitness options	Fully-equipped gym	Gym-in-a-Basket available	Gym-in-a-Basket available	Gym-in-a-Basket available
Conference facilities	Yes, suitable for 8 – 12 people	No	No	No
Weddings & blessings	Yes	Yes	Yes	Yes
Wheelchair access	Yes, with assistance	No	No	No
Complimentary laundry service	Yes	Yes	Yes	Yes
♾️ Beyond Signature Safari Shop	Yes	No	Yes	No

DISCOVER &BEYOND PHINDA PRIVATE GAME RESERVE

Lodge overview

Lodge comparison

	PHINDA ZUKA	PHINDA HOMESTEAD
OVERVIEW		
Lodge experience	Sole-use lodge that can also be booked individually. Old classic safari feel, quiet, intimate.	Luxurious private villa, contemporary farmhouse feel, full equipped, private service, private guiding.
Maximum number of guests	8	8
Number of rooms	8	4 (1 optional child's room)
Family accommodation	1 triple room	Yes, in suites or children's room.
WILDchild programme	Yes	Yes
Room types	Suites	Suites
Distance between rooms	Approx. 15m (50ft)	2 rooms are separated from the other 2 rooms by approx. 40m (120ft)
FACILITIES		
Power	220v AC	220v AC
Internet access	Yes, Wi-Fi in all rooms and guest areas	Yes, Wi-Fi in all rooms and guest areas
Wine store or cellar	No	No
Boma	Yes	Yes
Interactive kitchen	Yes	No
Swimming pool	Yes	Yes
Wellness offering	Healing Earth treatments offered in-room	Healing Earth treatments offered in-room or in the massage sala
Fitness options	Gym-in-a-Basket available	Fully-equipped gym
Conference facilities	No	No
Weddings & blessings	Yes	Yes
Wheelchair access	Yes, with assistance	Yes, with assistance
Complimentary laundry service	Yes	Yes
&Beyond Signature Safari Shop	Yes	No

DISCOVER 8BEYOND PHINDA PRIVATE GAME RESERVE

Lodge overview

Accommodation comparison

	PHINDA MOUNTAIN	PHINDA ROCK	PHINDA FOREST	PHINDA VLEI
Room size (square meters)	65 - 250	72	65	85
Room configuration	16 suites (max 2-3 people) 6 cottages (max 2-3 people) 3 family cottages (max 4 people) 1 family suite (max 8 people)	6 cottages (max 2 people)	16 suites (max 2 people)	6 suites (max 2 people)
Private verandah	Yes	Yes	Yes	Yes
Private plunge pool	Yes	Yes	No	Yes
Personal bar	Yes	Yes	No	Yes
Personal coffee station	Yes	Yes	Glass suites	Suites
Air conditioning / heating	Yes	Yes	Yes	Yes
Overhead fans	Yes	Yes	Yes	Yes
Mosquito nets	No	No	No	No
Bath	Yes	Yes	Yes	Yes
Shower	Indoor and outdoor shower	Indoor and outdoor shower	Indoor and outdoor shower	Indoor and outdoor shower
Seperate W.C	Yes	Yes	Yes	Yes
Telephone	Yes	Yes	Yes	Yes
Hairdryer	Yes	Yes	Yes	Yes
Internet access	Yes	Yes	Yes	Yes
In-room safe	Yes	Yes	Yes	Yes
Plug type	220V AC Plug Type C, D, M, N Adapters available	220V AC Plug Type C, D, M, N Adapters available	220V AC Plug Type C, D, M, N Adapters available	220V AC Plug Type C, D, M, N Adapters available
Triple bed option	Yes	No	No	No
Twin bed option	Yes	Yes	Yes	Yes
Double bed option	Yes	Yes	Yes	Yes
Interleading door	In family cottages and family suite	No	No	No
Accessibility	Wheelchair friendly with assistance	Not suitable for those with mobility issues	Not suitable for those with mobility issues	Not suitable for those with mobility issues

DISCOVER &BEYOND PHINDA PRIVATE GAME RESERVE

Lodge overview

Accommodation comparison

PHINDA ZUKA

PHINDA HOMESTEAD

Room size (square meters)	80	55
Room configuration	4 suites (max 2 people) 1 triple room available	4 suites (max 2 people) 1 optional children's room (sleeps 4 in bunkbeds)
Private verandah	Yes	Yes
Private plunge pool	No	No
Personal bar	No	No
Personal coffee station	No	No
Air conditioning / heating	Yes	Yes
Overhead fans	Yes	Yes
Mosquito nets	No	No
Bath	Yes	Yes
Shower	Yes	Indoor and outdoor shower
Seperate W.C	Yes	Yes
Telephone	Yes	Yes
Hairdryer	Yes	Yes
Internet access	Yes	Yes
In-room safe	Yes	Yes
Plug type	220V AC Plug Type C, D, M, N Adapters available	220V AC Plug Type C, D, M, N Adapters available
Triple bed option	Yes	No
Twin bed option	Yes	Yes
Double bed option	Yes	Yes
Interleading door	No	No
Accessibility	Wheelchair friendly with assistance	Wheelchair friendly with assistance

DISCOVER PHINDA PRIVATE GAME RESERVE

Our impact legacy

From our greater conservation model down to the tiniest details, every decision that we make revolves around our core ethic of Care of the Land, Wildlife and People.



DISCOVER &BEYOND PHINDA PRIVATE GAME RESERVE

Impact initiatives

Our land & wildlife

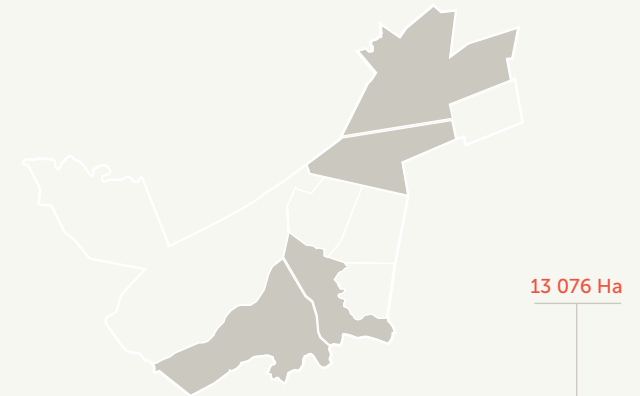
&Beyond was launched with the creation of Phinda Private Game Reserve in 1991. It was the first private game reserve in the province of KwaZulu-Natal, South Africa.

The original 13 076 hectares (32 311 acres) selected was identified as key conservation land. Wildlife had originally occurred here, but for almost a century this area had been dominated by pineapple, cattle, sisal and game farms, and was severely overgrazed and degraded. The founding vision was to rehabilitate this depleted tract of land, and reintroduce all the large mammal species that had originally lived in this region.

Care of the land, wildlife and people: the business model supporting this ambitious project was based on the principle that by harnessing international capital through low-impact, high-yield tourism, conservation can provide economic viability while also generating meaningful benefits for neighbouring rural communities.

Today, Phinda is not only a flagship property boasting six globally recognised and award-winning luxury safari lodges, but it is also a proven impact case study that is widely regarded as one of the world's most far-sighted and successful blueprints for international ecotourism.

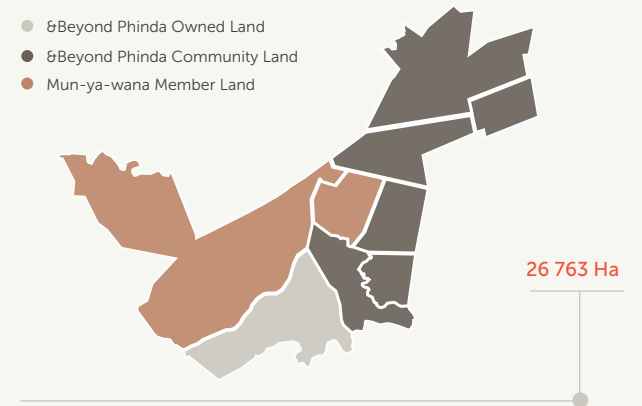
Phinda – meaning ‘the return’ in Zulu – has become the most compelling realisation of the &Beyond dream to create sustainable conservation through responsible tourism. ”



PHINDA PROPERTIES 1991

EXPANDED BIODIVERSITY

Through our relationships with the local communities and our close affiliation with the Mun-Ya-Wana Conservancy (a collaboration of wildlife land owners in the surrounding KwaZulu-Natal region), &Beyond Phinda has grown from the original 13 076 hectares (32 311 acres) to 26 763 hectares (66 133 acres) of protected wilderness.



MUN-YA-WANA PROPERTIES 2019

DISCOVER BEYOND PHINDA PRIVATE GAME RESERVE

Impact initiatives

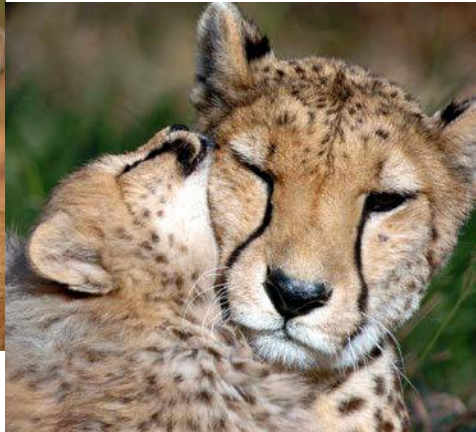
Pioneers in conservation

As wildlife was reintroduced to Phinda, it became the testing ground for many of the concepts, ideas and future working models of the company, including a number of conservation firsts.



LION

In 1992 and 1993, pioneering reintroduction methods were successfully used to mix Phinda's first 13 lions sourced from different prides. Now one of South Africa's most genetically diverse lion populations, they have supported the establishment of other reserve populations in Africa and even reversed a 15-year local extinction in Rwanda.



CHEETAH

The reintroduction of Namibian cheetah – 12 in two groups - was carefully planned to give them time to settle before lion were introduced - the first successful reintroduction of these two species into the same area. As one of Southern Africa's most important populations, they are in high demand to restock or develop new populations.



ELEPHANT

Phinda was the first private reserve to reintroduce elephants in 1991. The initial two intakes of elephant were 37 orphaned youngsters, with the first four adults arriving from Zimbabwe in 1993. 1994 marked the arrival of a group of 14 from Kruger National Park including a full breeding herd, and the birth of the first calf on Phinda.



RHINO

21 white rhino – an estimated 35 tons - were relocated in one day from a neighbouring farm in the largest translocation of its time. In 2004, Phinda was selected to start the WWF/ Ezemvelo KZN Wildlife Black Rhino Range Expansion Project and received 15 black rhino. The project's first calf was conceived and born on Phinda a year later.

DISCOVER 6BEYOND PHINDA PRIVATE GAME RESERVE
Impact initiatives

Our communities

Alongside the restoration of the land and reintroduction of the wildlife, the Phinda story is also about care of the people – the generation of meaningful community benefits through our conservation endeavours.

In those early days, our engagement with the communities was an extended, trust-building process, as their association with conservation authorities in this politically turbulent period had been largely negative. We were also fortunate to have a staff member, Walter Zulu, who was of royal lineage, to guide us through the complexities of the traditional meeting protocols.

Our undertaking was to create job opportunities, provide skills training and support community-led development projects through the establishment of the Rural Investment Fund (1992) – now Africa Foundation, our non-profit community development partner.

Perhaps this part of the Phinda story is best explained by community member, Gladys Zikhali: “The rural communities bordering Phinda were ordinary people. When Phinda started, for the most part, they did not think that changing a pineapple farm and cattle ranch into a game reserve was a good idea. They believed that there was every chance that the dangerous animals would destroy their farm stock, and perhaps even worse. They never thought that one day they could have better jobs and the opportunity for tertiary education

LAND-RETURN TO COMMUNITY

How far have things come since those early trust-building days?

In 2007 a pioneering land claim settlement took place between Phinda and the communities of Makhasa and Mqubokazi: 9 085 hectares (22 460 acres) of wilderness land was returned to its ancestral owners. Both communities made the decision to continue with the use of the land for wildlife and conservation rather than farming. Isaac Tembe from Africa Foundation describes this chapter in the Phinda story as “standing at the gate of a new dawn”.



DISCOVER ♾ BEYOND PHINDA PRIVATE GAME RESERVE
Impact initiatives

Foundational community-led projects

We believe that, in order for wildlife to thrive, local populations need to experience the benefits of participation in conservation.



MNQUOBOKAZI PRIMARY SCHOOL

Situated in the Mnqobokazi Community, Africa Foundation first assisted the school in 1993/1994 with two classrooms. Since then another two classrooms, electricity connection and a vegetable garden with water access and fencing has been provided.



MDUKU CLINIC

Situated in the Mduku Community, the early structure was funded by Africa Foundation in 1995 together with subsequent expansions. The clinic has gone from strength to strength. Today it is a 24-hour primary health care centre, serving over 5 5 000 community members a year.



MACEBO CRÈCHE

Located within the Mduku Tribal Authority area, the crèche was established in 1999 in collaboration with the Non-Profit Company, Operation Jumpstart. Africa Foundation has funded the build of two classrooms, including ceilings, electrification, tiling and furniture.

GENERAL ENQUIRIES

+27 11 809 4300

contactus@andbeyond.com

REGIONAL ENQUIRIES

Africa: africa.reservations@andBeyond.com

Asia: southasia.reservations@andBeyond.com

South America:

southamerica.reservations@andBeyond.com

PRESS ENQUIRIES

media@andBeyond.com

TRAVEL TRADE

enquiry@andBeyond.com



andBEYOND



[@andbeyondtravel](https://www.instagram.com/andbeyondtravel)
[#seewhatliesbeyond](https://www.instagram.com/andbeyondtravel)

andBeyond.com